



*M*idvaal Structures

Our commitment to precision drives every process, every system, everybody and every project.

## Midvaal Structures

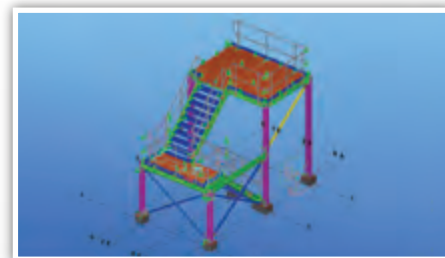
Midvaal Structures administers complete turnkey development projects for factories, warehousing, shopping centres, hangars, offices and plants. With more than 25 years of combined experience in structural steelwork, construction and design, you can be assured of quality at the right price.

### From beginning to end

The company administers projects from design to completion with a strong focus on the cost effectiveness of design without compromising the quality or aesthetic value of the property.

### Safety

Midvaal Structures are committed to a safe work environment. We continue to strive for a “zero harm” philosophy by implementing targeted safety training programmes. We have achieved 100 000 LTI free hours at the Kusile project.



# Services

Midvaal Structures offers clients the following services and onsite capabilities:

- Design
- Detailing
- Fabrication
- Corrosion Protection
- Lining
- Transport breakbulk to abnormal -  
Local, National & International
- ISO 9001:2008
- BEE Status: Level 6 BWO contributor

Our premises are based in Randvaal however our operations are carried out locally, nationally, throughout Africa and internationally.

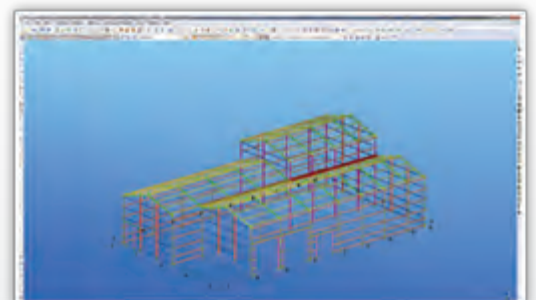
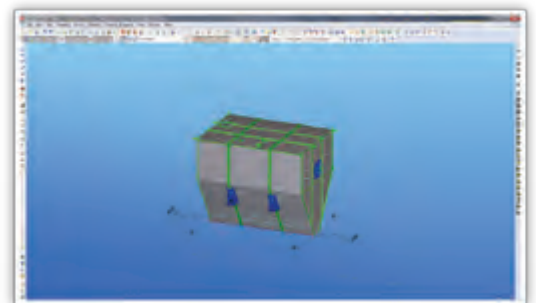




# Detailing

Our drawing office has the ability to produce process flow diagrams, multi-disciplined conceptual layouts and fabrication detail including:

- **Structural**  
Transfer towers, hangars, shopping centres, warehouses, etc.
- **Plate work**  
Bins, launders, underpans, tanks, chutes, etc.
- **Piping**  
Bends, flanges, T-pieces, etc.
- **Full model review / walk-through**  
Build your plant / equipment virtually before going live.
- **Conveyors**  
Gantries, trestles, take-ups, etc.



# Fabrication

Midvaal Structures has the capacity to deliver up to 600 Tons of fabricated structural steel and 200 Tons of plate work per month.

Our core fabrication competencies are:

- Conveyor systems
- Building steel work
- Plate Girders
- Chutes
- Bins
- Tanks
- Sumps
- Steel Structures

We offer increased workflow and zero bottle-necks. Our workshops also offer overhead cranes.



# We aspire to build great

## Workshop Equipment

### **Python X Plasma Cutter**

Structural Steel Fabrication has a new productivity champion in the PythonX CNC Plasma Cutting Fabrication System. Its revolutionary technology brings automated 3D fabrication to processing beams, channels, HSS, angle, plate and bar.

### **Ajan CNC Plasma Cutter**

We also have two Ajan CNC Plasma Cutters, with bed sizes of 6m x 3m and 12m x 3m, for all our base and connecting plates to be done in-house.

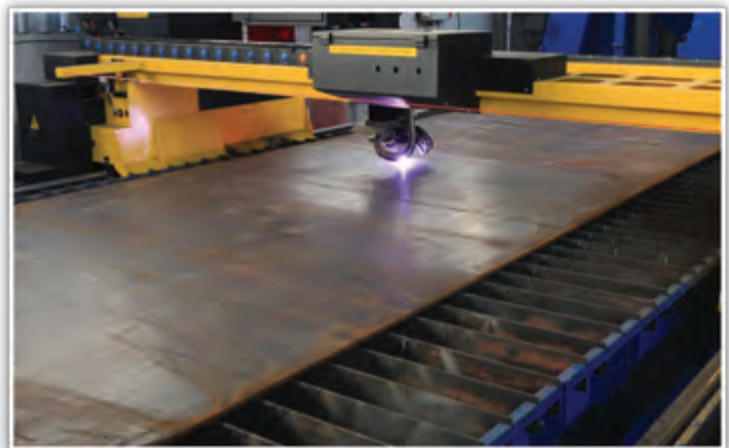
### **Lifting capacity**

Our workshop lifting capacity is 20ton at 7m hook height



## Built to Spec

Our workshop capacity and equipment allow us to undertake any project with confidence, and deliver to ISO 9001:2008 strict parameters.



# things



## Surface Preparation

Our qualified blasters are capable of blasting to SA 2.5 or SA 3 dependant on the clients specification. The blast room is equipped with nine 200 litre blast pots and a comprehensive safety system has been introduced to ensure the safety of all blasters. Currently our blast room is equipped with 16 blasting nozzles. All our blast pots are fitted with dead mans handles and we've introduced the buddy system as an added safety precaution.

## Specialised Coatings

We have in excess of 60 qualified spraypainters, brushhands and blasters to ensure that the preparation of the steel is done i.e. sanding, stripe coating etc.

## Lining

Rubber Lining on plate work and mechanical items as well as pipe work. We specialise in the application of chemical and steam cured Linatex and acid resistant rubbers.







# Site Erection

Midvaal Structures has the capabilities to erect 50 Tons of structure per day depending on the site and structure. Various site equipment:

- cherry pickers with up to 45m reach
- Crane 25tons
- Telescopic and lowbed trailer
- Staff bus
- Site offices and stores
- Various small plant and generators





# Construction

- Able to do projects of up to R300 million per annum
- Site Management
- ISO 9001:2008 Quality Management System
- Concrete floors 1500 sqm/day
- Brick work
- Slabs
- Plumbing
- Steel decking
- All aspects of turnkey projects
- Completed 23000m<sup>2</sup> full turnkey warehouse for Alstom comprising of earthworks, structural steel, fabricated and erected, concrete floors, 120ton gantry crane and electrical installation. Total project value was over R100 million



# Quality Management System

It is our policy to understand and meet the requirements of our customers, be that internal or external, and to “do it right, first time - every time.”

We, the management of Midvaal Structures, are committed to comply with requirements and continually improve the effectiveness of the quality management system and outstanding service to our clients. We shall endeavor, at a minimum to meet, but ideally exceed our clients expectations in terms of service, quality, delivery time and safety.

We strive to deliver cost effective construction solutions on time and in budget. We will continually strive to improve our service and our quality of product, by updating our process and implementing more effective technologies as they become viable.

## **Our quality policy is thus, directed towards achieving the following objectives:**

- To meet the requirements of ISO 9001:2008
- To meet the requirements of all 'other' relevant Legislation within our industry
- To provide a prospective customer with a high level of confidence that products and/or services supplied to an order will comply with an agreed specification.
- To contribute to the profit objectives of the company by optimising the direct cost of quality assurance against the cost of potential losses, defects and wastage
- To contribute to the impact value of perceived goodwill and credibility
- To improve communication between all departments and functions
- To increase quality awareness among all stakeholders

## **ISO 9001:2008 - Quality Management System**

Ensure that a product is manufactured and supplied on time to meet their intended purpose and performance criteria, at the right price, in conformance with the requirements, expectations and needs of all our customers and shareholders.

- To ensure the Quality Management System is appropriate to the nature, scale of its activities, products and services by means of internal audits.
- Strive for continuous improvement of performance by regular reviews of the objectives, targets, suitability, adequacy, cost and effectiveness of the systems.
- Comply with applicable legislation and other requirements to which the company subscribes
- Prevent accidents and incidents by implementing responsible Health & Safety Management Practices and emergency measures
- Encourage suppliers and contractors to comply with and implement these principles. In the fulfillment of the above Policy requirements, we shall assign adequate resources for Quality, Occupational Health and Safety Management and shall ensure that personnel are competent to perform their duties with excellence.



## Satisfied Customers

